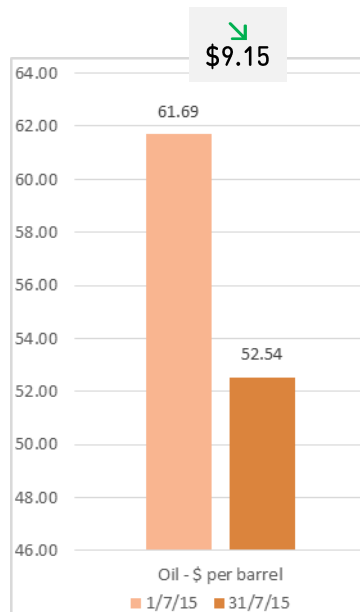
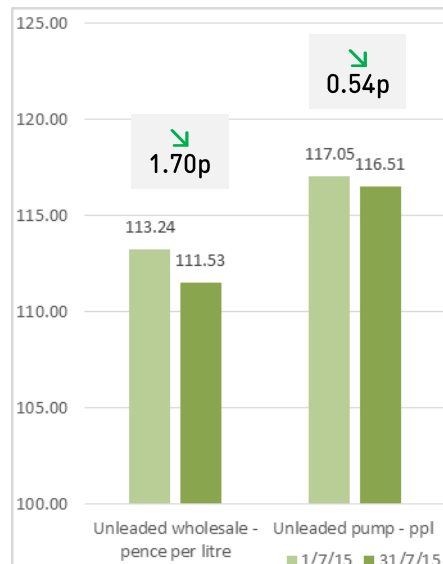


## UK fuel prices in July 2015



### Crude oil

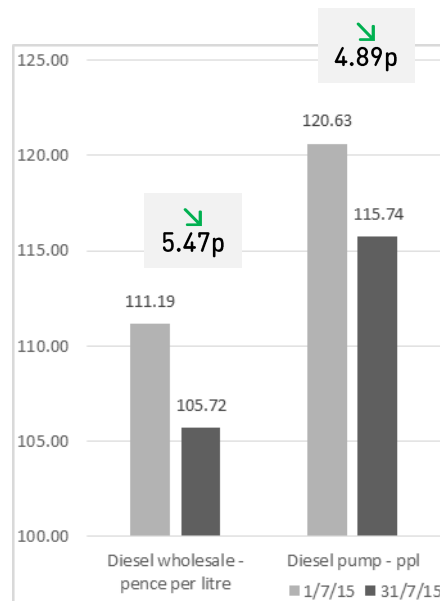
Price of a barrel of oil **fell**  
\$9.15 to \$52.54



### Unleaded

Wholesale price **fell** 1.70p  
to 111.53p per litre

Pump price **fell** 0.54p  
to 116.51p per litre



### Diesel

Wholesale price **fell** 5.47p  
to 105.72p per litre

Pump price **fell** 4.89p  
to 115.74p per litre

### Two-week price predictor

↘ **Unleaded** – should fall by around 1p per litre

↘ **Diesel** – should fall by around 5p per litre

### Our view on prices

"July was a month of good news for motorists with diesel vehicles. The 5p a litre diesel saving recorded in July means the cost of filling up an average 55-litre diesel family car, such as a Ford Focus, has dropped by £3 in a month.

"If the supermarkets continue to battle over prices, pump prices should reduce to around an average of 111p a litre – a price last seen in January 2010. This would shave another £2 off a tank of diesel. To put this in perspective, this is even lower than the 113p average price reached in January after oil hit a near six-year low of \$45 a barrel."

Simon Williams  
RAC fuel spokesman

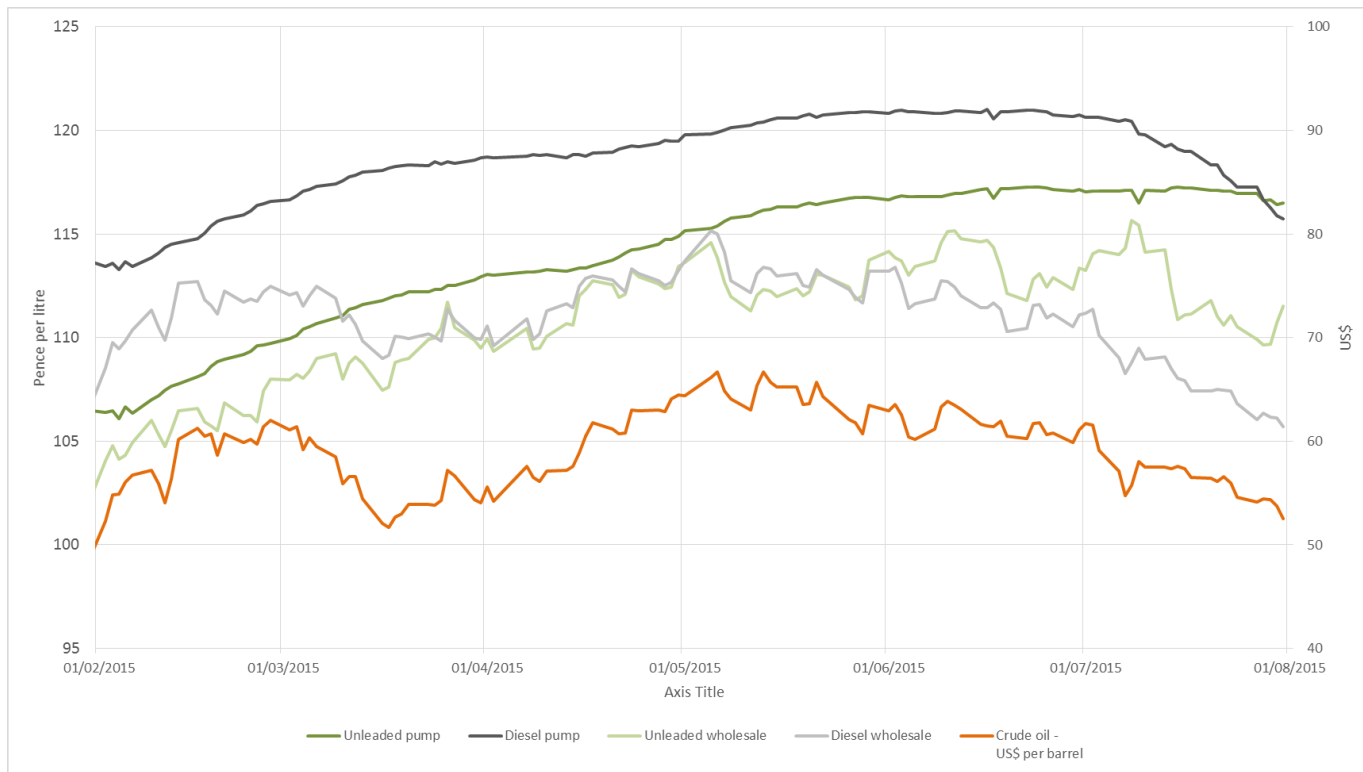


### In June 2015:

**4 billion** litres of fuel were sold in the UK

**£2.3 billion** of fuel duty (tax) revenue was raised

## Fuel prices: the longer term view



### Two-week price predictor

- **Unleaded** – should fall by around 1p per litre
- **Diesel** – should fall by around 5p per litre

### Compared to three months ago:

- Crude oil is currently 18% less expensive – \$52 versus \$65. £ is 2% stronger against \$
- Unleaded pump prices are currently 1% higher – 116.51p vs 114.89p
- Diesel pump prices are currently 3% lower – 115.74p versus 119.50p

### Compared to six months ago:

- Crude oil is 10% more expensive – \$52 versus \$48. £ is 4% stronger against \$
- Unleaded pump prices are 9% higher – 116.51p versus 106.52p
- Diesel pump prices are 2% higher – 115.74p versus 113.75p

### Compared to 12 months ago:

- Crude oil is 50% less expensive – \$52 versus \$104. £ is 8% weaker against \$
- Unleaded pump prices are 10% lower – 116.51p versus 129.85p
- Diesel pump prices are 19% lower – 115.74p versus 134.33p